

CURRENT COMPLETION

Last Updated: 3/10/2012 12:38 PM

Field Name		Lease Name		Well No.	
Field 2 Sample		Sample		81	
County, State				API No.	
Cimarron, Oklahoma				77-777-77777-0000	
Version		Version Tag			
0		Initial Completion			
G.L. (ft)	K.B. (ft)	Sec.	Township/Block	Range/Survey	
3,665.0	3,685.0	19	33S	18E	
Footage Call				Spud Date	Comp. Date
1440' FSL & 1360' From Section				7/25/2009	8/12/2009
Current Status					
Producing from Formation2. Still have additional Formation2 pay behind pipe.					
Prepared By		Updated By		Last Updated	
User		User		3/10/2012 12:38 PM	

Hole Summary

S	Date	O.D. (in)	Top (MD ft)	Bottom (MD ft)	Comments
C	7/25/2009	12.250	0	1,300	
C	7/27/2009	7.875	1,300	4,050	

Tubular Summary

S	Date	Description	O.D. (in)	Wt (lb/ft)	Grade	Top (MD ft)	Bottom (MD ft)
C	7/27/2009	Surface Casing	8.625	24.00	J55	0	1,300
C	8/1/2009	Production Casing	5.500	17.00	N80	0	4,050
C	8/19/2009	Tubing	2.875	6.50	J55	0	3,920
C	8/19/2009	Rods	1.500			3,750	3,895
C	8/19/2009	Rods	0.875			0	1,750
C	8/19/2009	Rods	0.750			1,750	3,750

Casing Cement Summary

S	Date	No. Sx	Csg. O.D. (in)	Top (MD ft)	Bottom (MD ft)	Comments
C	7/27/2009	550	8.625	0	1,300	Circ 148 sx.
C	8/1/2009	630	5.500	0	3,050	2nd Stage: Circ 100 sx
C	8/1/2009	240	5.500	3,050	4,050	1st Stage: Circ 40 sx thru DVT

Tools/Problems Summary

S	Date	Tool Type	O.D. (in)	I.D. (in)	Top (MD ft)	Bottom (MD ft)
C	8/1/2009	DVT, D/O	5.500	0.000	3,050	0
C	8/19/2009	TAC	5.500	2.880	3,780	0
C	8/19/2009	R Pump	1.500	0.000	3,895	3,910
C	8/19/2009	Nipple	2.875	1.500	3,910	0
C	8/14/2009	Cmt Ret	5.500	0.000	3,930	0
C	8/1/2009	FC	5.500	0.000	4,030	0

Cement Plug Summary

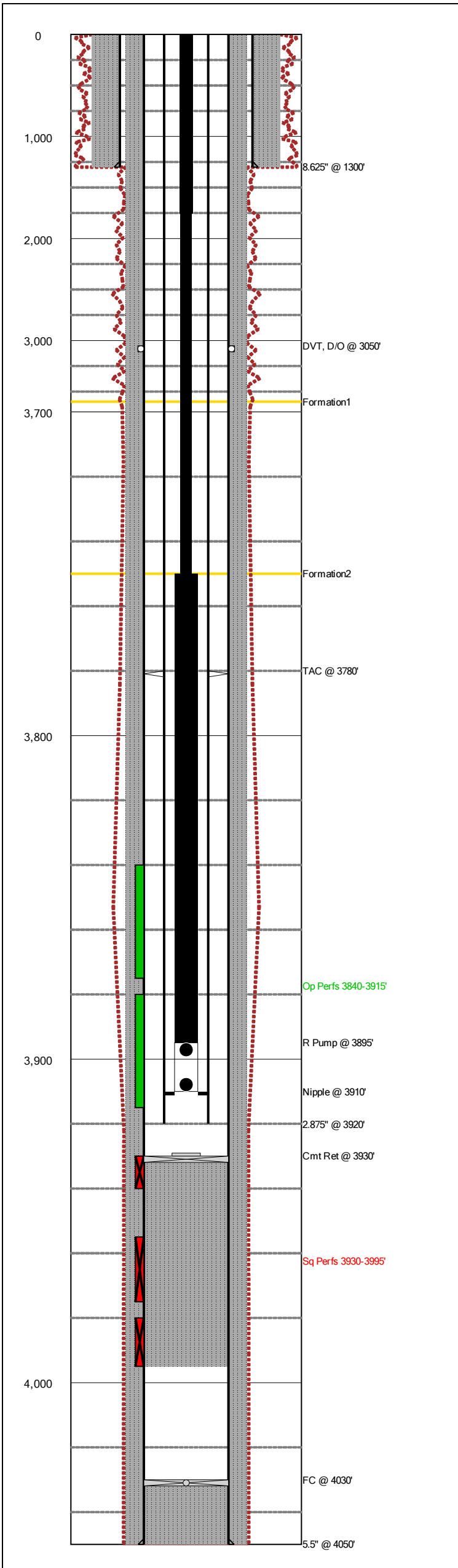
S	Date	No. Sx	O.D. (in)	Top (MD ft)	Bottom (MD ft)	Comments
C	8/14/2009	200	5.500	3,930	3,995	Sqz F1 Perfs
C	8/1/2009		5.500	4,030	4,050	Cmt in shoe jt

Perforation Summary

S	C	Date	Perf. Status	Formation	OA Top (MD ft)	OA Bottom (MD ft)	Shots
C		8/17/2009	Open	Formation2	3,840	3,915	144
C		8/11/2009	Squeezed	Formation2	3,930	3,995	96

Formation Tops Summary

Formation	Top (MD ft)	Comments
Formation1	3,600	
Formation2	3,750	



CURRENT COMPLETION

Last Updated: 3/10/2012 12:38 PM

Field Name		Lease Name	Well No.	County, State		API No.	
Field 2 Sample		Sample	81	Cimarron, Oklahoma		77-777-77777-0000	
Version	Version Tag			Spud Date	Comp. Date	G.L. (ft)	K.B. (ft)
0	Initial Completion			7/25/2009	8/12/2009	3,665.0	3,685.0
Sec.	Township/Block	Range/Survey	Footage Call				
19	33S	18E	1440' FSL & 1360' From Section				
Last Updated		Prepared By		Updated By			
03/10/2012 12:38 PM		User		User			
Current Status							
Producing from Formation2. Still have additional Formation2 pay behind pipe.							

Hole Summary

S	Date	O.D. (in)	Top (MD ft)	Bottom (MD ft)	Comments
C	7/25/2009	12.250	0	1,300	
C	7/27/2009	7.875	1,300	4,050	

Tubular Summary

S	Date	Description	O.D. (in)	Wt (lb/ft)	Grade	Top (MD ft)	Bottom (MD ft)	Comments
C	7/27/2009	Surface Casing	8.625	24.00	J55	0	1,300	
C	8/1/2009	Production Casing	5.500	17.00	N80	0	4,050	14' marker jt at 3300
C	8/19/2009	Tubing	2.875	6.50	J55	0	3,920	
C	8/19/2009	Rods	1.500			3,750	3,895	7 sinker bars
C	8/19/2009	Rods	0.875			0	1,750	67 rods w/ 2 rod subs
C	8/19/2009	Rods	0.750			1,750	3,750	80 rods

Casing Cement Summary

S	Date	No. Sx	Csg. O.D. (in)	Top (MD ft)	Bottom (MD ft)	Description	Comments
C	7/27/2009	550	8.625	0	1,300		Circ 148 sx.
C	8/1/2009	630	5.500	0	3,050		2nd Stage: Circ 100 sx
C	8/1/2009	240	5.500	3,050	4,050		1st Stage: Circ 40 sx thru DVT

Tools/Problems Summary

S	Date	Tool Type	O.D. (in)	I.D. (in)	Top (MD ft)	Bottom (MD ft)	Description	Comments
C	8/1/2009	DV tool (drilled out)	5.500	0.000	3,050	0		ECP at 3055'
C	8/19/2009	Tubing Anchor	5.500	2.880	3,780	0		
C	8/19/2009	Rod Pump	1.500	0.000	3,895	3,910		
C	8/19/2009	Nipple	2.875	1.500	3,910	0		SN
C	8/14/2009	Cement Retainer	5.500	0.000	3,930	0		
C	8/1/2009	Float Collar	5.500	0.000	4,030	0		

Cement Plug Summary

S	Date	No. Sx	O.D. (in)	Top (MD ft)	Bottom (MD ft)	Comments
C	8/14/2009	200	5.500	3,930	3,995	Sqz F1 Perfs
C	8/1/2009		5.500	4,030	4,050	Cmt in shoe jt

Perforation Summary

S	C	Date	Perf. Status	Formation	Comments		
C		8/11/2009	Squeezed	Formation2	F1		
		Top (MD ft)	Bottom (MD ft)	SPF	Shots	Phasing (deg)	Interval Comments
		3,930	3,940	2	22	120	
		3,955	3,975	2	42	120	
		3,980	3,995	2	32	120	
S	C	Date	Perf. Status	Formation	Comments		
C		8/17/2009	Open	Formation2	F2		
		Top (MD ft)	Bottom (MD ft)	SPF	Shots	Phasing (deg)	Interval Comments
		3,840	3,875	2	72	120	
		3,880	3,915	2	72	120	

Formation Top Summary

Formation Name	Top (MD ft)	Comments
Formation1	3,600	
Formation2	3,750	

Completion History Summary

Date	Comments
7/25/2009	Spud well.
8/1/2009	Run and cmt 5.5" casing.
8/10/2009	Tag DVT at 3050' and drill out. RIH to PBTD at 4030'
8/11/2009	Run GR/CCL/CBL and log from TD to 300' and 500' to surface. Loggers TD at 4020'. TOC at surface'. Good Bond. Perforate Formation2 F1 perforations with 3-1/8" slick guns with 2 SPF and 120 deg phasing.
8/12/2009	MIRU SOMEONE ENERGY SERVICES. WASH PERFS FROM 3930'-3995' WITH 70 BBLs FRESH WTR @ 4.6 BPM. TBG # 1400. CSG OPEN. PUMP 2100 GALS 15% HCL NEFE ACID. CLOSE CSG VALVE. WASH PERFS WITH ACID @ 3.5 BPM. TBG 600#. CSG 300#. MAX PSI-808#

CURRENT COMPLETION

Last Updated: 3/10/2012 12:38 PM

Date	Comments
8/13/2009	SITP @ 0#. RU SWAB.MADE 35 SWAB RUNS AND RECOVERED 265 BBLs BLACK WTR. LOAD PLUS 125 BBLs. FIRST RUN FL @ 800'. REST OF SWAB RUNS FL @ 1200'. CI WELL. PREP TO SQUEEZE PERFS.
8/14/2009	SITP @ 0#. RIH WITH SWAB AND FOUND FL @ 900'. RELEASE PKR AND POH WITH TBG. MIRU SOMEONE WL. RIH WITH 5 1/2" CEMENT RET AND SET @ 3930' RD WEATHERFORD. RIH WITH STINGER AND TBG. STING IN TO CEMENT RET. MIRU RISING STAR.TEST LINES TO 3500#. LOAD...
8/17/2009	MIRU SOMEONE WL. RIH WITH 3 1/8" SLICK GUNS AND PERF Formation2 PHASE 2 @ 3840'-3875',3880'-3915'. 2 SPF 120 DEG PHASE. RD SOMEONE RIH WITH SONIC HAMMER AND TBG TO 3865'. MIRU SOMEONE . TEST LINES TO 4000#...
8/18/2009	SITP @ 500#. RU SWAB. MADE 15 SWAB RUNS AND RECOVERED 120 BBLs WITH 30% OIL CUT.GOOD GAS AFTER SWAB RUN. GAS CUT FL @ 700'. SI WELL. PREP TO RUN PRODUCTION EQUIPMENT.
8/19/2009	SITP @ 500#. BLED WELL DN. RELEASE PKR AND POH WITH TBG. RIH WITH 2 7/8" SN,2 7/8" BLAST JT,1 JTS 2 7/8" TBG,TAC , 120 JTS 2 7/8" TBG AND 2 10' SUBS. SN @ 3910' TAC @ 3780' ND BOP. NU WELLHEAD. RIH WITH PUMP AND RODS.RD PU AND CLEAN LOCATION.