

CURRENT COMPLETION

Last Updated: 3/10/2012 12:44 PM

Field Name		Lease Name		Well No.	
Field1		Lease1		1	
County, State				API No.	
Tulsa, Oklahoma				35-123-12345-0000	
Version		Version Tag			
0					
G.L. (ft)	K.B. (ft)	Sec.	Township/Block	Range/Survey	
1,020.0	1,060.0	1	10N	2E	
Footage Call				Spud Date	Comp. Date
330' FSL & 660' From SE/4				1/1/2011	1/31/2011
Current Status					
Producing from Form1.					
Prepared By		Updated By		Last Updated	
User		User		3/10/2012 12:44 PM	

Hole Summary

S	Date	O.D. (in)	Top (MD ft)	Bottom (MD ft)	Comments
C		12.250	0	2,500	
C		7.875	2,500	13,000	

Tubular Summary

S	Date	Description	O.D. (in)	Wt (lb/ft)	Grade	Top (MD ft)	Bottom (MD ft)
C	1/3/2011	Surface Casing	8.625			0	2,490
C	1/31/2011	Production Casing	5.500			0	12,980
C	2/5/2011	Tubing	2.375			0	8,000

Casing Cement Summary

S	Date	No. Sx	Csg. O.D. (in)	Top (MD ft)	Bottom (MD ft)	Comments
C	1/3/2011	500	8.625	0	2,490	
C	1/31/2011	1,500	5.500	5,000	12,980	

Tools/Problems Summary

S	Date	Tool Type	O.D. (in)	I.D. (in)	Top (MD ft)	Bottom (MD ft)
C	2/5/2011	GLV	2.375	0.000	2,000	0
C	2/5/2011	GLV	2.375	0.000	4,500	0
C	2/5/2011	GLV	2.375	0.000	6,000	0
C		SS,C	2.375	0.000	7,000	7,050
C	2/5/2011	GLV	2.375	0.000	7,500	0
C		SS,O	2.375	0.000	7,600	7,650
C	2/5/2011	Nipple	2.375	1.791	7,980	0
C		On/Off	2.375	0.000	7,990	0
C	2/5/2011	Pkr	5.500	2.375	8,000	0
C	1/31/2011	FC	5.500	0.000	12,920	0

Cement Plug Summary

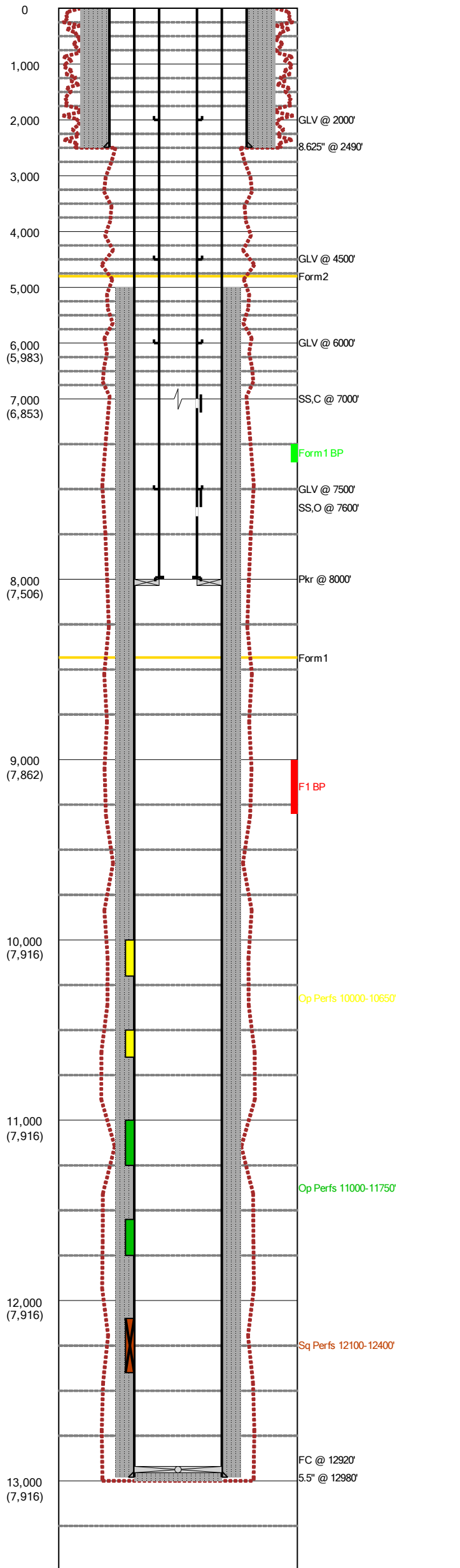
S	Date	No. Sx	O.D. (in)	Top (MD ft)	Bottom (MD ft)	Comments
C	1/31/2011		5.500	12,920	13,000	Cement in shoe joint

Perforation Summary

S	C	Date	Perf. Status	Formation	OA Top (MD ft)	OA Bottom (MD ft)	Shots
C	█	2/4/2011	Open	Form1	10,000	10,650	2,107
C	█	2/1/2011	Open	Form1	11,000	11,750	1,805
C	█	2/1/2011	Squeezed	Form1	12,100	12,400	600

Formation Tops Summary

Formation	Top (MD ft)	Comments
Form2	4,800	
Form1	7,700	



CURRENT COMPLETION

Last Updated: 3/10/2012 12:44 PM

Field Name		Lease Name		Well No.	County, State		API No.	
Field1		Lease1		1	Tulsa, Oklahoma		35-123-12345-0000	
Version	Version Tag			Spud Date	Comp. Date	G.L. (ft)	K.B. (ft)	
0				1/1/2011	1/31/2011	1,020.0	1,060.0	
Sec.	Township/Block	Range/Survey		Footage Call				
1	10N	2E		330' FSL & 660' From SE/4				
Last Updated				Prepared By		Updated By		
03/10/2012 12:44 PM				User		User		
Current Status								
Producing from Form1.								

Hole Summary

S	Date	O.D. (in)	Top (MD ft)	Bottom (MD ft)	Comments
C		12.250	0	2,500	
C		7.875	2,500	13,000	

Tubular Summary

S	Date	Description	O.D. (in)	Wt (lb/ft)	Grade	Top (MD ft)	Bottom (MD ft)	Comments
C	1/3/2011	Surface Casing	8.625			0	2,490	
C	1/31/2011	Production Casing	5.500			0	12,980	
C	2/5/2011	Tubing	2.375			0	8,000	

Casing Cement Summary

S	Date	No. Sx	Csg. O.D. (in)	Top (MD ft)	Bottom (MD ft)	Description	Comments
C	1/3/2011	500	8.625	0	2,490		
C	1/31/2011	1,500	5.500	5,000	12,980		

Tools/Problems Summary

S	Date	Tool Type	O.D. (in)	I.D. (in)	Top (MD ft)	Bottom (MD ft)	Description	Comments
C	2/5/2011	Gas Lift Valve	2.375	0.000	2,000	0		
C	2/5/2011	Gas Lift Valve	2.375	0.000	4,500	0		
C	2/5/2011	Gas Lift Valve	2.375	0.000	6,000	0		
C		Sliding Sleeve (closed)	2.375	0.000	7,000	7,050		
C	2/5/2011	Gas Lift Valve	2.375	0.000	7,500	0		
C		Sliding Sleeve (open)	2.375	0.000	7,600	7,650		
C	2/5/2011	Nipple	2.375	1.791	7,980	0	XN	
C		On/Off Tool	2.375	0.000	7,990	0		
C	2/5/2011	Packer	5.500	2.375	8,000	0		
C	1/31/2011	Float Collar	5.500	0.000	12,920	0		

Cement Plug Summary

S	Date	No. Sx	O.D. (in)	Top (MD ft)	Bottom (MD ft)	Comments
C	1/31/2011		5.500	12,920	13,000	Cement in shoe joint

Perforation Summary

S	C	Date	Perf. Status	Formation	Comments				
C		2/4/2011	Open	Form1	Phase2				
		Top (MD ft)	Bottom (MD ft)	SPF	Shots	Phasing (deg)	Interval Comments		
		10,000	10,200	6	1,201	120			
		10,500	10,650	6	906	120			
S	C	Date	Perf. Status	Formation	Comments				
C		2/1/2011	Open	Form1	Phase3				
		Top (MD ft)	Bottom (MD ft)	SPF	Shots	Phasing (deg)	Interval Comments		
		11,000	11,250	4	1,005	120			
		11,550	11,750	4	800	120			
S	C	Date	Perf. Status	Formation	Comments				
C		2/1/2011	Squeezed	Form1	Phase1				
		Top (MD ft)	Bottom (MD ft)	SPF	Shots	Phasing (deg)	Interval Comments		
		12,100	12,400	2	600	120			

Formation Top Summary

Formation Name	Top (MD ft)	Comments
Form2	4,800	
Form1	7,700	

Behind Pipe Summary

C	Formation Name	Top (MD ft)	Bottom (MD ft)	Net Pay (ft)	Drain. Area (acre)	Res. Press. (psi)	Water Sat. (%)	Eff. Por. (%)	EUR Oil (MBO)	EUR Gas (MMCF)	Comments
	Form1	7,250	7,350	13	640	0	0.0%	0.0%	0	0	
	F1	9,000	9,300	15	640	1,320	12.2%	13.3%	0	102,550	True1

Completion History Summary

Date	Comments

CURRENT COMPLETION

Last Updated: 3/10/2012 12:44 PM

Date	Comments
1/1/2011	Spud well
1/3/2011	Run and cement 8.625" casing.
1/31/2011	TD well at 13,000' MD and run 5.5" casing and cement.
2/1/2011	Perforate Phase1 perms and test. Lower Phase 1 perms tested wet so squeeze off with 150 sx.
2/4/2011	Perforate Phase 2 perms and test.
2/5/2011	Run 2.375" tubing, gas lift valves, and packer. Set packer at 9570'
2/6/2011	Well testing 2,500 MCF/d and 112 BO/d.

Field Name		Lease Name		Well No.	County, State	API No.	Version	Version Tag	Spud Date	Comp. Date	G.L. (ft)	K.B. (ft)
Field1		Lease1		1	Tulsa, Oklahoma	35-123-12345-0000	0		1/1/2011	1/31/2011	1020	1060
Sec.	Township/Block	Range/Survey	Footage Call		Last Updated	Prepared By		Updated By				
1	10N	2E	330' FSL & 660' From SE/4		3/10/2012 12:44 PM	User		User				

Current Status
Producing from Form1.

